

# Dentocore & Dentocore Body<sup>1</sup>

Core build-up and post cementation  
composite material



Solid support for final reconstruction

Convenient to use

Two different viscosities to suit  
different applications

Enhance your  
daily practice



# Two steps, one product!



## Key points

### Solid support for final reconstruction

- > High degree of polymerisation - PHB technology (Hyperbranched Multi-Methacrylate Polymers) and nanoparticles
- > Limited shrinkage

### Convenient to use

- > Consistent, homogeneous mix for controlled application and distribution
- > Dual cure

### Two different viscosities to suit different applications

- > **Dentocore:** has a light viscosity that enables it to flow into fissures and narrow spaces. Can be used for endodontics
- > **Dentocore Body:** stays in place even in the case of complex maxillary abutments. Spreads evenly under pressure
- > Time saving: same product is used to seal and restore the core

## Indication

A dual-cure, fluoride releasing, resin composite material designed for the fabrication of core build-ups.

### Technical datas\*

- |                     |                     |
|---------------------|---------------------|
| > Shrinkage rate    | 1.2 %               |
| > Working time      | 1 min 30 - 3 min 30 |
| > Auto setting time | 2 min 30 - 4 min 30 |



\* Internal report, Itena Clinical, "Dentocore - Core Build-Up"

# Clinical case

Example of a clinical case by Dr Massimo Giovarruscio



Lower canine with two roots. Irreversible pulpitis diagnosed, requiring root canal treatment (periapical inflammation).



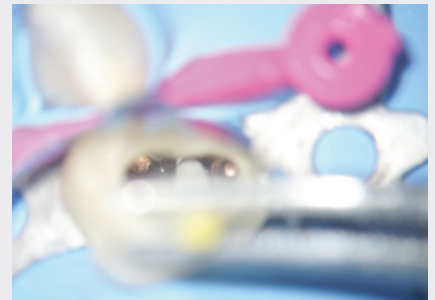
Root canal treatment and obturation with **MTA Biorep** repair cement and **MTA Bioseal** obturation cement.



1 After root canal treatment, a matrix is fitted for restoration.



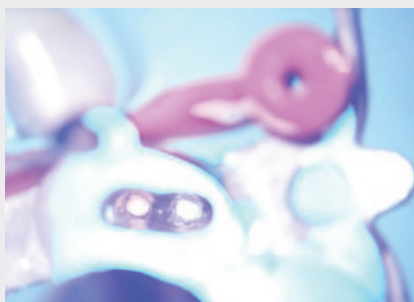
2 Cleaning and preparation of access cavity.



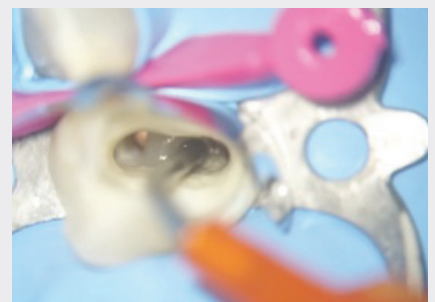
3 Testing the **Dentoclic** fiberglass post.



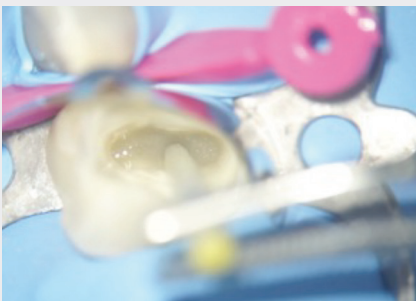
4 Preparation of the **Dentoclic** fiberglass post, using **Silan-It** silane and **Quickbond** adhesive.



5 Application of **Quickbond** adhesive in the canal, followed by light-curing for 40 seconds.



6 Injection of **Dentocore** material into the canal.



7 Application of **Dentocore** onto the post, then insertion of the post into the canal.



BEFORE



AFTER

Tooth treatment in a single visit:

- Root canal treatment and obturation (**MTA Biorep** and **MTA Bioseal**).
- Corono-radicular reconstruction (**Dentocore** and **Dentoclic**).
- Then restoration with **Reflectys** universal compositel.

**Final result:** Complete treatment, from canals to aesthetic restoration.

Dentocore	
<b>Dentocore white cartridge</b> 1 cartridge 50 g + 25 mixing tips + 25 intraoral tips	DCB-50
<b>Dentocore A3 cartridge</b> 1 cartridge 50 g + 25 mixing tips + 25 intraoral tips	DCA3-50
<b>Dentocore A3 Automix</b> 1 syringe Automix 9 g + 10 mixing tips + 10 thin intraoral tips + 10 extra-thin intraoral tips	DCSAK1

Refills of mixing tips	
<b>Syringe<sup>16</sup></b>	
Reill of 20 mixing tips	DTEM-20
Refill of 25 mixing tips + 25 thin intraoral tips (Length 100 mm Ø 1.1 mm)	DCE-50
Refill of 25 mixing tips + 25 extra-thin intraoral tips (Length 135 mm Ø 0.09 mm)	DCEXF-50
<b>Cartridge<sup>9</sup></b>	
25 blue mixing tips	186213
25 yellow intraoral tips	186214

Dispensing Gun <sup>9</sup>	
Dispensing Gun for 1:1 / 2:1 25 ml cartridge	185761

Dentocore Body	
<b>Dentocore Body A3 Cartridge</b> 1 cartridge 50 g + 25 mixing tips + 25 intraoral tips	DCBODY-50
<b>Dentocore Body A3 Automix</b> 1 syringe Automix 9 g + 10 mixing tips + 10 thin intraoral tips + 10 extra-thin intraoral tips	DABODY1-10
<b>Dentocore Body Automix A3 - Value Pack</b> 3 syringes Automix 9 g + 30 mixing tips	DABODY3-VP



[itena-clinical.com](http://itena-clinical.com)

Central Parc Bat B, 97 Allée de la Louve, 93420 Villepinte - FRANCE - T. + 33 1 45 91 61 40.  
FP.DENTOCORE.EN-B-04/2024

Follow us!



<sup>1</sup> Medical Device Class IIa, CE 0425. Manufacturer : Itena Clinical. <sup>9</sup> Medical device Class I. Manufacturer: Medmix Switzerland AG, Switzerland. Authorized Representative: Medmix GmbH, Germany. <sup>16</sup> Medical device Class I. Manufacturer: DXM CO, Ltd, South Korea. Authorized Representative: CMC Medical Devices & Drugs, Spain. Reserved for professional dental use, not reimbursed by health insurance organizations under the LPPR. Carefully read the instructions and labeling before use.