

# Dentotemp<sup>1</sup>

Long-term temporary cement  
and permanent on the implant



Easy handling

Single-block removal

Relining possible

Suitable for use on living teeth

Enhance your  
daily practice



# A cement with many applications

Long-term (over 6 months)  
& permanent on implants

## Key points

### Easy handling

- > Self-curing in 2 stages: gel for easy removal of excess and final set
- > Consistent, homogeneous mix for controlled application and distribution, thanks to the automix syringe and mixing tips

### Single-block removal

- > For re-operation without damaging tissue or restoration, due to the thinness of the film (10 µm)

### Relining possible

### Suitable for use on living teeth

- > Eugenol-free composition to avoid irritation and interference with the curing of resin-based definitive sealants



## Clinical case



Initial view.



- 1 Teflon placed prior to placement of crown to isolate the screw head.



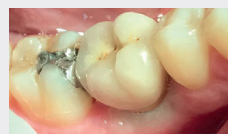
- 2 Filling in of basal surface. Work time between 45 and 60 seconds.



- 3 Apply pressure to the temporary crown, holding it in place or having the patient bite gently on a cotton wad until initial setting for 2 min to 2 min 30 sec.



- 4 Remove the excess with a probe.



Final view.

## Indications

- **Temporary sealing** on natural, non-reconstituted teeth (composite, core).
- **Temporary sealing** for cosmetic elements such as veneers or onlays.
- **Permanent sealing** for crowns and bridges on implants with possibility of removing restorations.

### Dentotemp

#### DENTOTEMP manual mix

2x 12 g syringes (base+catalyst) + 25 mixing spatulas + 1 mixing block DT-2.10

#### Dentotemp Automix intro kit

1x 6 g syringe + 5 mixing tips DTCA1-5

#### Dentotemp Automix

2x 6 g syringes + 20 mixing tips DTCA2-20

#### Dentotemp Automix Value Pack

4x 6 g syringes + 40 mixing tips DTCA4-VP

### Tips<sup>16</sup>

Refill with 20 mixing tips	DTEM-20
Refill with 25 mixing tips + 25 thin intraoral tips (Length: 100 mm ø 1.1 mm)	DCE-50
Refill with 25 mixing tips + 25 extra-thin intraoral tips (Length: 135 mm ø 0.09 mm)	DCEXXF-50



itena-clinical.com

Central Parc Bat B, 97 Allée de la Louve, 93420 Villepinte - FRANCE - T. + 33 1 45 91 61 40.  
FPDENTOTEMPEN-B-04/2024

Follow us!

