

Iperbond Max

Universal adhesive (8th generation)



Stronger and longer-lasting bonding

Time-saving

Practical use

Patient comfort

Enhance your
daily practice



2 monomers 4-META & 10-MDP, for enhanced adhesion

Key points

Stronger and longer-lasting bonding

- > 2 monomers 4-META and 10-MDP
- > Stability over time measured by marginal adaptation (dentin: 95% to 97%, quality 1 enamel: 99% to 100%, quality 1)¹

Time-saving

- > 3-in-1 product (primer, adhesive and etching)²

Practical use

- > 1 single bottle, 1 single application step

Patient comfort

- > Soft etching (2 > pH > 2,5)

Can be used with
self-etching
& selective etching



Clinical case

Using Iperbond Max in etch and rinse mode (direct restoration)



Initial view.



- 1** Etching of enamel with Dentoetch
Application time: 30 seconds.



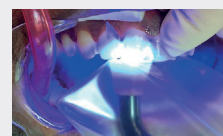
- 2** Rinsing and drying in dry air.



- 3** Application of Iperbond Max adhesive to the entire tooth wall.
Application time: 20 seconds.



- 4** Drying of adhesive in dry air.



- 5** Curing.

Indications

- Direct light-cured composite restorations onto natural teeth.
- Indirect restorations made from composite, ceramic and metal (inlays, onlays, veneers, crowns) with light-cured and dual-cured luting composites.
- Repairs to fractured restorations.

Iperbond Max

5 ml bottle

IP-5



Enhance your daily practice

itena-clinical.com

Central Parc Bat B, 97 Allée de la Louve, 93420 Villepinte - FRANCE - T. + 33 1 45 91 61 40.
FP.IPERBONDMAX.EN-B-04/2024

Follow us!

