

# MTA Bioseal<sup>\*</sup>

Bioceramic root canal  
obturation cement



Effective tissue regeneration and  
remineralization

Filling of all canals, including  
lateral ones

No tooth discoloration

Enhance your  
daily practice



# Filling and regenerating at the same time!

## Key points

### Effective tissue regeneration and remineralization<sup>1</sup>

- > High release of calcium hydroxide ions (Ca<sup>2+</sup>), due to MTA composition

### Filling of all canals, including lateral ones

- > Thanks to a flow-enhancing MTA/resin mix and an adapted tip<sup>2</sup>

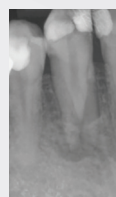
### No tooth discoloration

- > Calcium tungstate formulation

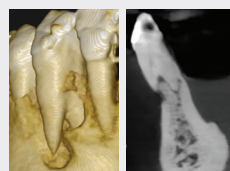


## Clinical case

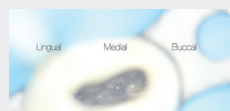
Case study by Dr Massimo Giovarruscio



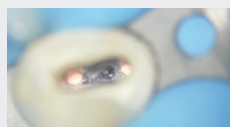
Lower canine with two roots and more than one root canal. Irreversible pulpitis diagnosed, requiring root canal treatment (periapical inflammation).



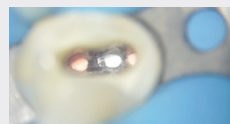
- 1 Additional short medial canal (CBCT scan), suggesting the use of a calcium silicate hydraulic material (MTA), which is easier to apply in this complex anatomy.



- 2 Surgical microscope: additional short medial canal between buccal and lingual roots.



- 3 Obturation of buccal and lingual canals by warm vertical compaction with MTA Bioseal obturation cement and gutta-percha.



- 4 Median canal obturation with MTA Bioseal.



Post-obturation X-ray.

## Indication

For the permanent sealing of root canals and may be used in combination with root canal filling materials.

### MTA Bioseal

#### Kit

4g Syringe of MTA cement + 10 mixing tips + 1 mixing block

MTA-BSEAL



[itena-clinical.com](http://itena-clinical.com)

Central Parc Bat B, 97 Allée de la Louve, 93420 Villepinte - FRANCE - T. + 33 1 45 91 61 40.  
FPMTABIOSEAL.EN | IND.A 01/24

Enhance your daily practice



Follow us!



Medical Device Class IIb, CE 0425. Manufacturer: itena Clinical. Reserved for professional dental use, not reimbursed by health insurance organizations under the LPPR. Carefully read the instructions and labeling before use.