

# Reflectys & Reflectys Flow

Universal composite for anterior  
and posterior restorations



Enhance your  
daily practice

Natural aesthetic finish

Deep & homogeneous  
curing

Easy handling



# Keep a natural smile



## Key points

### Natural aesthetic finish

- > Color stability over time, due to low discoloration rate<sup>1</sup>
- > Mimics the translucency and brilliance of natural teeth thanks to nanofillers<sup>2</sup>
- > Wide range of shades (17) and translucency levels(4)

### Deep & homogeneous curing

- > Curing depth of 2.95 mm for Reflectys and 2.50 mm for Reflectys Flow

### Easy handling

- > High filler concentration (80%) facilitates shaping and polishing and prevents sticking to instruments<sup>3</sup>
- > Secure closure and composite preservation, through the cap glued to the syringe
- > Fine tip for Reflectys Flow

## Indications

### Reflectys

- Class I, II, V of posterior teeth.
- Class III, IV, V of anterior teeth and cervical cavities (wedge shaped defect) involving root surfaces.

### Reflectys Flow

- Class V restorations (cervical caries, root erosion, wedge shaped defects)
- Anterior restorations (Class III, IV)
- Small posterior restorations
- Extended fissures sealing in molars and premolars
- Repair of composite/ceramic veneers
- Blocking out of undercuts

# Clinical case

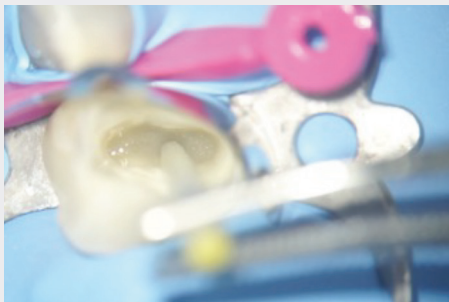
Clinical case by Dr Massimo Giovarrusco



Lower canine with two roots. Irreversible pulpitis diagnosed, requiring root canal treatment (periapical inflammation).

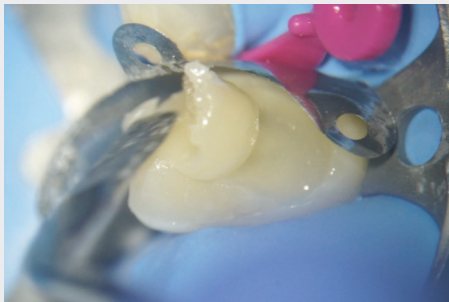


Root canal treatment and obturation using **MTA Biorep** repair cement and **MTA Bioseal** obturation cement.



**1** Corono-radicular reconstruction using a **Dentoclic** fiberglass post and **Dentocore** material.

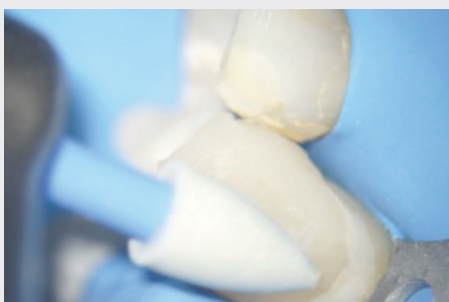
**Reflectys** composite was then used to restore the tooth in successive stages.



**2** Application of **Quickbond** adhesive.



**3** Placement of **Reflectys** composite (A3 shade then enamel).



**4** Tooth polishing with **Polish HD** polishers.



BEFORE



AFTER

Tooth treatment in a single visit:

- Root canal treatment and obturation (**MTA Biorep** and **MTA Bioseal**).
- Corono-radicular reconstruction (**Dentocore** and **Dentoclic**).
- Then restoration with **Reflectys** universal composite.

Reflectys		
Shades	4 g syringe + 1 spatula	20 compules of 0,25 g
Bleach	SRTYS-BLC	CPTYS-BLC
A1	SRTYS-A1	CPTYS-A1
A2	SRTYS-A2	CPTYS-A2
A3	SRTYS-A3	CPTYS-A3
A3.5	SRTYS-A3.5	CPTYS-A3.5
A4	SRTYS-A4	CPTYS-A4
B1	SRTYS-B1	CPTYS-B1
B2	SRTYS-B2	CPTYS-B2
B3	SRTYS-B3	CPTYS-B3
C2	SRTYS-C2	CPTYS-C2
C3	SRTYS-C3	CPTYS-C3
D3	SRTYS-D3	CPTYS-D3
Enamel	SRTYS-E	CPTYS-E
Incisal	SRTYS-I	CPTYS-I
Pedo	SRTYS-P	CPTYS-P
Opaque A2	SRTYS-A20	CPTYS-A20
Opaque A3	SRTYS-A30	CPTYS-A30

Reflectys Flow		
Shades	1x 2 g syringe + 10 tips ø 0.9 mm	
A1	FWTYS-A1	
A2	FWTYS-A2	
A3	FWTYS-A3	
A3.5	FWTYS-A3.5	
B2	FWTYS-B2	
B3	FWTYS-B3	



**Reflectys - Restoration kit**  
 For all your routine restorations  
 4 Reflectys syringes (A2, A3, A3.5, B2)  
 + 1 Iperbond Max adhesive  
 KTYS-4.1B



**Reflectys - Stratification kit**  
 For the most delicate aesthetic cases  
 7 Reflectys syringes (A1, A2, A3, Opaque A2,  
 Opaque A3, Enamel, Incisal) + 1 Iperbond Max adhesive +  
 4 syringes of Dentoetch etching gel  
 KTYS-7.2BE



itena-clinical.com

Central Parc Bat B, 97 Allée de la Louve, 93420 Villepinte - FRANCE - T. + 33 1 45 91 61 40.  
 FPREFLECTYS.EN | IND.A 01/24

Enhance your daily practice

Follow us!



Medical Device Class Ila, CE 0425. Manufacturer: itena Clinical. Reserved for professional dental use, not reimbursed by health insurance organizations under the LPPR. Carefully read the instructions and labeling before use.

1. Raeisosadat, F. (2017). Staining Microhybrid Composite Resins With Tea and Coffee. Avicenna J Dent Res, 9(1). [https://www.researchgate.net/publication/319905032\\_Staining\\_Microhybrid\\_Composite\\_Resins\\_With\\_Tea\\_and\\_Coffee](https://www.researchgate.net/publication/319905032_Staining_Microhybrid_Composite_Resins_With_Tea_and_Coffee)  
 2. Mikhail, SS. (2013). Optical characteristics of contemporary dental composite resin materials. J Dent. 41(9), pp. 771-8. <https://pubmed.ncbi.nlm.nih.gov/23851132/><https://pubmed.ncbi.nlm.nih.gov/27546859/>  
 3. Vreven, J. (2005). Résines composites. EMC Odontologie. <https://www.em-consulte.com/article/38204/resines-composites>